

Illinois SIMMENTAL News

May, 2006

Mid America Showcase Simmental Sale **SALE REPORT**

The Mid America Showcase Simmental Sale, held in conjunction with the Illinois Beef Expo in Springfield on February 25, 2006 was a success. The sale is sponsored by the Illinois Simmental Association and is managed by Larry Martin Cattle Sales. Consignors were charged only 12% commission for this year's sale. 44 lots averaged over \$3027 with the following category averages:

13 Bulls -	\$2654
2 Bred Heifers -	\$3450
25 Open Females-	\$3212
1 Semen Package-	\$2025
3 Embryos/Flush-	\$3150
44 TOTAL LOTS -	\$3027

Remember, any open female purchased through the Mid America Showcase Sale will be eligible for additional premium monies at upcoming shows. The Champion High Percentage and Champion Low Percentage Females at the Summer Beef Expo will be awarded \$500 savings bonds. *ARE YOU CONSIGNING IN 2007...*



On The Inside...

Preview Show Info - P. 2
Preview Show Entries - P. 3
Mid America Sale Results - P. 4

Heifer Points Results - P. 6
Annual Meeting Awards - P. 7
Rick Haefner Scholarship - P. 8
Heifer Points Form - P. 9

Spring Show Results - P. 10-11
ASA Intern Report - P. 12
Memorial Day Show - P. 13

IJSA SUMMER PREVIEW SHOW

- IBA Summer Beef Expo - Peoria, IL -

- June 9th and 10th -

The IJSA Simmental Preview Show will be held in conjunction with the IBA Summer Beef Expo at the Peoria Fairgrounds in Peoria, IL on Friday, June 9th and Saturday, June 10th. Rooms available at Best Western, 4112 N Brandywine, 309/685-2556. Mention "Preview Show" for a reduced rate. Cattle must be entered by 8:00 p.m. Friday. Advance entries made by June 5th for \$20.00 per head. Entries made on-site are \$25.00 per head. The show will be held beginning at 9:00 a.m. Saturday. An IJSA Meeting will be held at 4:00 p.m. A Field Day/Regional Workout will be held at 4:30 on Friday. Examples of all events held at the Regional Classic will be covered. Junior and Senior teams will be assembled for the Regional Classic. A brief IJSA meeting is scheduled to follow. All IJSA members who will be attending either the Regional or National Classic shows or the Illinois State Fair Young Producers contest should attend.

IJSA Meeting - 4:00 p.m. Friday, June 9th - Workshop Following:

Herdsman Quiz - Sire Summary - Public Speaking - Sales Talk - Livestock Judging

This workshop is open to juniors participating with any breed - not just Simmental

IJSA SUMMER PREVIEW SHOW

- General Rules -

1. Eligible exhibitors must not have reached their 21st birthday prior to January 1, 2006.
2. Owners of all animals shown must be a member of the Illinois Junior Simmental Association and 2006 dues must be paid prior to exhibition.
3. All animal registration certificates must verify ownership in a junior member's name. Steers and heifers must have a registration certificate to show. The general expectation is that each animal will be shown in the individual animal competition classes by the owner (showmanship classes excluded). Exceptions can be granted by the ISA Board or a majority opinion of the board members present at the show.
4. Cattle must have a legible tattoo that conforms to ASA records.
5. All animals must have a health paper. Health papers must meet state of Illinois Animal Health Requirement.
6. Heifers must be born on or after September 1, 2004. Steers must be born on or after January 1, 2005.
7. Heifers under $\frac{3}{4}$ blood SM are considered Low Percentage Heifers. Heifers $\frac{3}{4}$ blood SM and higher are considered Simmentals. Steers recorded $\frac{1}{2}$ SM or higher on the registration paper are eligible to show as Simmental steers. Percent CS is not considered for steers nor heifers.
8. Animals may begin arriving on fairgrounds anytime on Friday morning, June 9th. All Simmental cattle must be on fairgrounds by 8:00 p.m. Friday, June 9th. All entries must be made by 8:00 p.m. Friday, June 9th. Steers will be weighed Friday evening.
9. No alcohol is permitted at the Preview Show regardless of person's age.
10. No artificial filling of animals will be allowed. The addition of hair, hemp or any similar substance to any part of an animal is prohibited.
11. Cattle must remain in the barn overnight or placed in your trailer. No tie-outs are permitted.
12. No cattle may leave the fairgrounds until the Shorthorn and Limousin shows have been completed.
13. The Simmental show will begin at 9:00 a.m. on Saturday, June 10th.

COOKOUT!

Please join us for a Simmental Family Cookout at the Preview Show.
The ISA and IJSA will be cooking out following the IJSA meeting and field day activities. Meat provided. Please bring a dish to pass.
Come and be a part of your association!

2006 Summer Beef Expo - IJSA Preview Show

PRE-ENTRY FORM

Pre-entries made by June 5th=\$20.00

On-site entries=\$25.00

EXHIBITOR INFO:

Exhibitor's Name _____ Birth Date _____

Address _____ City _____ State/Zip _____

CATTLE INFO:

Animal's Name _____ Birth Date _____

Sire _____ ASA Registration # _____ Tattoo _____

Circle One: Hi% Heifer Lo% Heifer Steer

EXHIBITOR INFO:

Exhibitor's Name _____ Birth Date _____

Address _____ City _____ State/Zip _____

CATTLE INFO:

Animal's Name _____ Birth Date _____

Sire _____ ASA Registration # _____ Tattoo _____

Circle One: Hi% Heifer Lo% Heifer Steer

EXHIBITOR INFO:

Exhibitor's Name _____ Birth Date _____

Address _____ City _____ State/Zip _____

CATTLE INFO:

Animal's Name _____ Birth Date _____

Sire _____ ASA Registration # _____ Tattoo _____

Circle One: Hi% Heifer Lo% Heifer Steer

Pre-entries are \$20.00 per head and should be received by Monday, June 5th

On-site entries are allowed for \$25.00 per head

Number of head entering _____ x \$20.00 = _____

IJSA dues paid for _____ x \$5.00 = _____

TOTAL = _____

Please make checks payable to Illinois Simmental Association

Mail checks and entry forms to:

Jennifer Tarr - Treasurer, ISA

3511 N. 2200 E. Rd., LeRoy, IL 61752



2006 SHOW RESULTS

Mid America Showcase Sale Show



Champion Simmental Heifer
Consigned by Schick Cattle Co.
Sold to Jeff Wiarda - \$19,500



Reserve Champion Simmental Heifer
Consigned by Fox Creek Cattle
Sold to Bobby May - \$4,900



Champion Low Percentage Heifer
Consigned by Triple Creek Simmentals
Sold to Bird Cattle Co. - \$3,800



Res. Champion Low Percentage Heifer
Consigned by Haefner Show Cattle
Sold to Josh Adams - \$3,400



Champion Bred Heifer
Consigned by Alan Edwards
Sold to Stan Metzger - \$3,900



Reserve Champion Bred Heifer
Consigned by Larry Martin
Sold to Anderson Family - \$3,000



Champion Simmental Bull
Consigned by Fox Creek Cattle
Sold to Rick Heaton - \$3,800



Reserve Champion Simmental Bull
Consigned by Schick Cattle Co.
Sold to Brad Chapman - \$5,500

REMEMBER...

...any open female purchased through the Mid America Showcase Sale is eligible for additional premium monies at upcoming shows. The Champion High Percentage and Champion Low Percentage Females at the Summer Beef Expo will be awarded \$500 savings bonds. The ISA Board of Directors would like to continue to find incentives for junior exhibitors to purchase Illinois Simmental genetics.
ARE YOU CONSIGNING IN 2007...

Thank You

We greatly appreciate all those members that supported the craft and semen auctions. Whether you donated, bid or bought, your generosity has not gone unnoticed.

Here are the totals:

Craft - \$345

Semen - \$1875

Special thanks to:

ABS Global

Brian Brace 309-372-4435

Accelerated Genetics

Keith Funk 309-369-8292

Genex

Chad Hoffman 309-838-4929

Greg Fairfield 217-846-3110

JDJ Ranch

Contact Doug Parke 859-421-6100

Schick Cattle Co.

Chris Schick 217-519-4095

ISA COMMITTEES:

Annual Meeting:

Darin Smith, Chair
Karen Myerscough, Kerry Travis

Illinois Beef Expo:

Brad Dorsey, Chair
Stephen Robb,
Stan Tarr & Wendell Alwardt

IJSA Preview Show:

Kerry Travis, Co-Chair
Brad Dorsey, Co-Chair
Ryan Haefner & Karen Myerscough

IL Performance Tested Bull Sale:

Curt Rincker, Chair
Terry Osborne, Mark Beabout

Sales:

Ryan Haefner - Chair
Tom Engel, Derek Rapp
Darin Smith

IJSA Queen:

Diana Shreck, Chair
Amanda Robb, Stephanie Steele

Junior Advisor:

Kerry Travis - Chair
Kristi Huizenga,
Mary Bloomberg, Beth Dorsey
Karen Myerscough

Illinois State Fair:

Brad Dorsey, Chair
Ryan Haefner, Stan Metzger
Wendell Alwardt

Promotions & Public Relations:

Steele Family, Chair
Bob Adcock, Stan Metzger
Jennifer Tarr

By Laws:

Brad Dorsey and the
ISA Board of Directors



www.illinoissimmental.com

2005 IJSA Heifer Points Results

<i>Illinois Bred and Owned:</i>			<i>Illinois Owned:</i>		
1st	Adam Shreck <i>STS Sweet Polly</i>	575 pts.	1st	Charlie Myerscough <i>LLSF Stroke of Luck</i>	1000 pts.
2nd	Ross Thomas <i>CMB Joker's Lass</i>	389 pts.	2nd	Shea Bramlet <i>HPF Ms Independence</i>	519 pts.
3rd	Samantha Walker <i>DI Black Gold Dream</i>	380 pts.	3rd	Troy Bertsche <i>HS Paradise Girl</i>	370 pts.
4th	Kylie Smith <i>DLS Look My Way</i>	131 pts.	4th	Tyler Alwardt <i>Meyer Ranch P406</i>	218 pts.
5th	Allie Huizenga <i>HUIZ Pollyanna</i>	53 pts.	5th	Danae Alwardt <i>DAF Rhonda</i>	182 pts.
6th	Lacee Beabout <i>SPVF Strictly Business</i>	52 pts.	6th	Blair Jones <i>3C Pantyhose</i>	57 pts.
7th	Cole Steele <i>DD Pieka Boo</i>	50.5 pts.	7th	Blake Wright <i>Drake Sabi</i>	49 pts.
8th	Leslee Beabout <i>IZZ Prelude</i>	21 pts.	8th	Dalton Heavner <i>DANR Drama Queen</i>	13 pts.
9th	Darla Steele <i>FC Silver Charm</i>	15 pts.	9th	Zack Graff <i>WS Ms LJ</i>	12 pts.
10th	Emma Metzger <i>Metz Baby Princess Fiona</i>	8 pts.			
11th	Derek Wright <i>4-J Miss Ebony</i>	6.5 pts.			



Illinois Bred and Owned Division:

Adam Shreck, Samantha Walker, Emma Metzger, Leslee Beabout, and Allie Huizenga



Illinois Owned Division:

Front Row: Zack Graff, Cole Steele and Dalton Heavner
Back Row: Blake Wright, Charlie Myerscough
And Tyler Alwardt

Special thanks to Stan Metzger for continuing to organize this awards Program and for his donation toward the IJSA Points Jackets.

New Rule Change for 2006 - all nominations must be sent to Stan electronically.

Submit your point totals throughout the season and totals will be posted on

www.IllinoisSimmental.com

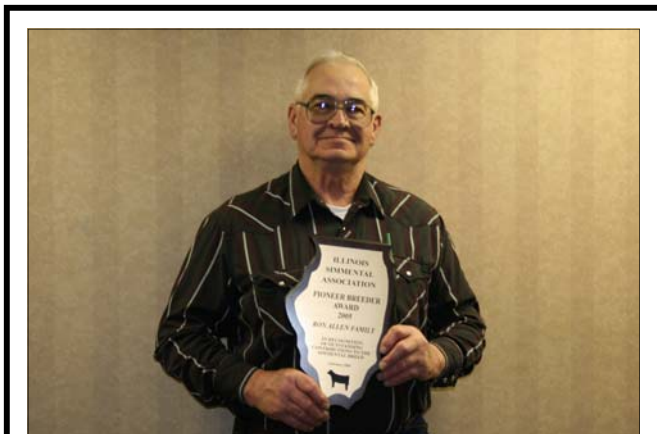
2006 ISA Annual Meeting Awards



ISA Member of the Year
Rick Haefner
(Presented by Brad Dorsey)



IJSA Member of the Year
Adam Shreck
(Presented by Karen Myerscough)



ISA Pioneer Breeder of the Year
Ron Allen



ISA Breeder of the Year
Chris Schick
(Presented by Ryan Haefner)

Dear Board of Directors and Members of the Illinois Simmental Association;

Thank you for honoring Rick's memory with the 2005 Member of the Year award. Rick's involvement with the ISA was a great source of both pride and pleasure to him.

Rick always looked forward to attending the Beef Expo, Illinois State Fair, and every sale, show and meeting. He appreciated quality cattle and enjoyed the competition, but it was spending time with friends that mattered the most to him.

The plaque will serve as a reminder to us of Rick's dedication to the association and the value he placed on your friendship. Thank you for being such an important part of Rick's life.

Sincerely,
Joann, Erin, & Ryan Haefner

ISA Exhibitor of the Year **Bo Bramlet**

This award was to be presented to Bo Bramlet. Unfortunately, Bo was unable to attend the banquet. Congratulations to Bo on a successful show season.

Rick Haefner Memorial Scholarships Awarded



Joann Haefner, Blake Bloomberg, Ryan and Erin Haefner

1st Annual Rick Haefner Memorial Scholarships Awarded to IJSA Members at IJSA Annual Meeting

The 1st Annual Rick Haefner Memorial Scholarships were awarded to IJSA members who submitted essays on the importance of leadership. The essays, along with information about education and activities, were reviewed by the Rick Haefner Family. This year's \$250 scholarship winners were Blake Bloomberg (pictured above) and Justin Adcock. Kiley Smith was the recipient of a \$100 scholarship. The scholarships were available to any IJSA members pursuing post high school education or vocational training.

ISA ON THE WEB...



Promoting Simmental Cattle
Promoting our Association
Communicating Information

- Sale Results
- Show Results
- Heifer Points
- More to come...

www.illinoissimmental.com

Illinois Junior Simmental Association Point Show Competition Scoring Format

The five highlighted shows are: the Illinois Beef Expo, the IJSA Summer Preview Show, the Illinois State Fair Junior Show, the Illinois State Fair Junior Land of Lincoln Show, and the Illinois State Fair Open Show. A Champion at one of these show will earn the following points:

Champion Simmental Heifer	250 pts.
Reserve Champion Heifer	100 pts.
Division Champion Heifer	50 pts.
Reserve Division Heifer	25 pts.

At the Summer Regional and National Junior Heifer Show where a group of "Top Heifers" are selected, such as "Top 10 Heifers" or "Top 20 Heifers", points will be earned as follows:

Summer Regional:		Junior National:	
1st	250	1st	500
2nd	225	2nd	475
3rd	200	3rd	450
4th	175	4th	425
5th	150	5th	400
6th	125	6th	375
7th	100	7th	350
8th	75	8th	325
9th	50	9th	300
10th	25	10th	275
		11th	250
		12th	225
		13th	200
		14th	175
		15th	150
		16th	125
		17th	100
		18th	75
		19th	50
		20th	25

A Champion at any other show, local fair, FFA show, major show, or jackpot will count as one point per Simmental heifer shown, i.e. 47 Simmental heifers shown equals 47 points. A Reserve Champion will receive 1/2 the points of a Champion female.

Nomination forms must be sent by January 15, 2007
EMAIL or FAX all point show nominations to:
Stan Metzger - Metzger Cattle Company
metz10@consolidated.net

(If emailing your entry, make sure to receive confirmation back from Stan that your nomination was received.)

Be sure to include the junior's name, a copy of the heifer's registration paper, and a list of the shows won and the number of heifers exhibited in each Simmental show. Please include the junior's preferred jacket size.

- Points will be awarded in two divisions:
1. Illinois Bred & Illinois Owned
 2. Illinois Owned

Jackets will be given to the 10 juniors whose heifer's have accumulated the most points in each division. A junior may receive only one jacket regardless of the number of heifers earning points.

ILLINOIS SIMMENTAL ASSOCIATION

Junior Member Heifer Points Competition

- NOMINATION FORM -

To receive consideration for the Heifer Points Competition, this form must be completed and FAXED or EMAILED to Stan Metzger on or before **January 15, 2007**. Please fill out this form entirely and accurately. If nominating more than one heifer, please fill out one form per heifer.

Junior's Name: _____ ASA Membership #: _____

Address: _____

Telephone #: _____ Jacket Size: _____

Heifer's Name: _____ ASA Registration #: _____

_____ Illinois Bred and Illinois Owned Division

_____ Illinois Owned Division

- SHOW WINNINGS INFORMATION -

Highlighted Shows: (See info from scoring format on following page)

<u>Date of Show:</u>	<u>Name of Show:</u>	<u>Championship:</u>	<u># of Heifers in Show:</u>
_____	_____	_____	_____
_____	_____	_____	_____
_____	_____	_____	_____
_____	_____	_____	_____

Regional & Junior National Shows: (See info from scoring format on following page)

<u>Date of Show:</u>	<u>Name of Show:</u>	<u>Championship:</u>	<u># of Heifers in Show:</u>
_____	_____	_____	_____
_____	_____	_____	_____

Other Shows: (See info from scoring format on following page)

<u>Date of Show:</u>	<u>Name of Show:</u>	<u>Championship:</u>	<u># of Heifers in Show:</u>
_____	_____	_____	_____
_____	_____	_____	_____
_____	_____	_____	_____
_____	_____	_____	_____

FAX or EMAIL to Stan Metzger • metz10@consolidated.net • by January 15, 2007



2006 SHOW RESULTS

Illinois Beef Expo - Springfield, IL



Champion Simmental Heifer
Crystal Steck - Knoxville, IL



Reserve Champion Simmental Heifer
Brian Bates - Kewanee, IL



Champion Percentage Simmental Heifer
Kylie Smith - Oblong, IL



Reserve Champion Percentage Simmental Heifer
Danielle Hill - Winnebago, IL



Reserve Champion Simmental Steer
Champion Illinois Owned Simmental Steer
Devin Olson - Geneseo, IL

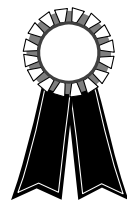


Reserve Champion Illinois Simmental Steer
Josh Walsh - Jerseyville, IL



2006 SHOW RESULTS

U of I Hoof & Horn - Champaign, IL



Champion Simmental Heifer
Tyler Adcock - Moweaqua, IL



Reserve Champion Simmental Heifer
Crystal Steck - Knoxville, IL



Champion Percentage Simmental Heifer
Champion Heifer Overall
Jason Minnaert



Reserve Champion Percentage Simmental Heifer
Jacob Jones - Pontiac, IL



Champion Simmental Steer
Devin Olson - Geneseo, IL



Reserve Champion Simmental Steer
Hannah Bauer

**ILLINOIS SIMMENTAL
ASSOCIATION
BOARD OF DIRECTORS**

Brad Dorsey, President
8239 Bivens Rd.
Dorsey, IL 62021
618-377-9182

Tom Engel
17831 N. 600 E. Rd.
Flanagan, IL 61740
815-796-4440

Kerry Travis, Secretary
11220 N. 375th St.
Oblong, IL 62449
618-592-4550

Jennifer Tarr, Treasurer
3511 N. 2200 E. Rd.
LeRoy, IL 61752
309-962-9609
jtarr@fccattle.com

Wendell Alwardt
5519 E. 600th Ave.
Altamont, IL 62411
618-483-5972

Ryan Haefner
29904 IL Rt. 40
Milledgeville, IL 61051
815-225-5146

Derek Rapp
2068 St. Mary's Rd.
Sublette, IL 61367
815-857-2250

Stephen Robb
6174 Lowe Rd.
Kinmundy, IL 62854
618-267-8096

Darin Smith
1730 Hwy 123
Alexander, IL 62601
217-478-2521

Greetings From Mountainous Montana!

Report from ASA Intern, Darla Steele

Things are really different out here compared to good ole flat Illinois! I have officially been in Bozeman at the American Simmental Association headquarters since the beginning of February. I am working closely with Marty Ropp and Annie Allen on projects for the Regional Classics and National Classic. I want to encourage all of the Juniors to register online at www.simmental.org and registration forms are listed under the AJSA link. This should be easier and more convenient for you. The registration deadline for North Central Regional, which is in Hutchinson, KS, is May 15 and for the National Classic, which is in Madison, WI, is June 10.

I have also been working closely with Jerry Lipsey on a couple articles relating to genetic improvements and indices, which will run in *the Register*. It is also important for Simmental breeders to pay close attention to all of the discussions about TH and PHA. While our breed is currently "free" of the abnormalities, it is imperative that we make smart bull decisions when producing SimGenetics.

I hear that the Illinois Simmental Association had an extremely successful sale at the Illinois Beef Expo. I want to send my congratulations to all the breeders and participants in the sale. I look forward to returning home in early June and hope to see you all around this summer at some shows! If there is anything I might be able to assist you with, please contact me at dsteale@simmgene.com or 406-587-4531.

Special Recognition

The Illinois Simmental Association and Illinois Junior Simmental Association would like to give special thanks to Darla Steele for her service to our associations and our industry. Darla has served as the IJSA Queen for the past 2 years and IJSA President for the past year. We look forward to hearing more about her internship with ASA. We also look forward to introducing the new IJSA Queen, Allie Huizenga in our next issue of the newsletter. Allie needs no introduction as she has been very visible in the showring and in the junior association. Please welcome Allie to her new role as Illinois Junior Simmental Association Queen.



James Flach Memorial Day Cattle Show

Sunday, May 28th

1:00pm

Martin Livestock Center
Rt. 51 South, Clinton, IL

All Breed
Heifer & Steer
Show

For anyone
21 yrs. & younger

2006 IBA POINT SHOW

Judge

Phil Johnson- Illiopolis, IL

Angus - Charolais - Herefords - Maine-Anjou - Shorthorn - Simmental - X-Bred

- * \$25 entry fee per animal
- * Entries made on day of show
- * Jackpot Premiums
- * Check-in / Weigh-in Sunday 9am to 11am
- * Cattle may arrive Saturday from 4 pm to 8 pm
- * Cattle must arrive by 10am Sun.
- * Steers shown by breed & weight
- * Heifers shown by breed – youngest to oldest
- * Crossbred heifers shown by weight
- * Bring your own bedding – Clean-up is required

\$500 Championship Money & Director's Chairs Donated by Marilyn Flach

Lunch served by C & M Concessions

**Show Committee Co-Chairmen:
Larry Martin & Bill Bree**

*For more information contact:
Shereth at Martin Auction Co. (217) 935-8211
Or Larry Martin (217) 433-0242*

Breed Representatives:

Angus: Lynn Miller
New Holland, IL (217) 445-2442

Hereford: Jerry Entwistle
New Holland, IL (217) 445-9937

Simmental: Bill Bree
Lincoln, IL (217) 735-1474

Shorthorn: Mark Gordon
Middletown, IL (217) 735-2637

Stone Livestock Supply
sponsoring prizes for
Jr. & Sr. Showmanship
classes & a Special
showmanship class
for Parents to show their
skills on the end
of the halter!

Seedstock, Commercial & Environmental Producer Nominations Due

Illinois Beef Association members are encouraged to make nominations for the 2006 Seedstock Breeder, Commercial Producer and Environmental Stewardship Awards. The winners are recognized at the IBA Annual Meeting to be held on June 30 and July 1 at the Stoney Creek Inn in Quincy, Illinois.

The Illinois Seedstock Breeder and Commercial Producer winners are placed in competition with other state winners at the Annual Beef Improvement Federation. Over the past thirty years sixty seedstock and commercial producers have represented Illinois. The Beef Improvement Federation pioneered the performance-testing program many years ago. It standardized performance calculation procedures that resulted in current performance programs administered by breed associations and universities.

The National Cattlemen's Beef Association honors cattle producers for their excellent stewardship and their commitment to conservation on the ground through the Environmental Stewardship Award Program. Through this program the Illinois winner is placed in competition on the regional level. Winners at the state, regional and national level are prime examples of how environmental management benefits both the cattle-men's bottom line and the resources in their care.

Contact Dave Seibert, Animal Systems Educator with the University of Illinois Extension for applications (309-694-7501 Ext. 224). They should be completed by June 1 and forwarded to Dave Seibert, East Peoria Extension Center, 727 Sabrina Drive, E. Peoria, IL 61611.

- NEW FOR 2006 - Illinois State Fair Open Percentage Simmental Show Will Be Held On Friday, August 11th.

Thank You, Thank You, Thank You

*Special Thanks to Karen
Myerscough and Fonda Smith
for providing the great table
decorations for the ISA An-
nual Meeting and Banquet.
Your generosity is greatly
appreciated!*

Thank You, Thank You, Thank You

To advertise in the...

Illinois Simmental News

ISSUE:	HIGHLIGHT:	AD DEADLINE:
January/February	IL Beef Expo	January 15th
May/June	IJSA Preview Show	May 5th
August/September	IL State Fair	July 5th
November/December	Summer Show Results	October 5th

Full Page Black & White - \$100 per issue
Half Page Black & White - \$60 per issue
Business Card Black & White - \$60 per year

To reserve ad space and make payments, contact:

Jennifer Tarr
3511 N. 2200 E. Rd., LeRoy, IL 61752
309/962-9609 or email: jtarr@fccattle.com

I.S.A. Membership Application

"Working Together To Make A Difference"

Application is hereby made for membership in the Illinois Simmental Association to be issued to the undersigned.

Membership Name: _____

Farm Name (if different): _____

Address: _____

City: _____ State: _____ Zip: _____

Phone: _____ County: _____ Email: _____

ASA#: _____

Directions to your farm: _____

We agree to abide by the rules and regulation, constitution and by-laws of the Association as amended from time to time as interpreted and enforced by the Board of Directors. The undersigned applicant expressly agrees that the Board of Directors has and shall forever retain the exclusive and sole right to discontinue any member's membership whenever, in the sole and unlimited discretion of said Board of Directors any member shall be found to have failed to comply with any of the association's rules, regulations, constitution or bylaws.

Signed: _____

Voting Membership(s) @\$35.00= _____

Junior Membership(s) @\$ 5.00= _____

_____ Total Enclosed

Junior Name(s): _____

Make payments to:
Illinois Simmental Association

Mail payments to:
Jennifer Tarr, Treasurer, 3511 N. 2200 E. Rd., Leroy, IL 61752

ISA Calendar Of Events

JUNE:

- 5 Pre-entry deadline for IJSA Preview Show
- 9 Junior Preview Show Check-In - Peoria, IL
- 9 IJSA Field Day and Cookout - Peoria, IL
- 10 Junior Preview Simmental Show - Peoria, IL
- 14-17 Eastern Regional Classic - Mt Gilead, OH
- 15-17 North Central Regional Classic - Hutchinson, KS
- 30 Simmental Breeders Sweepstakes Entry Deadline

JULY:

- 10-14 AJSA National Classic - Madison, WI
- 29-30 Simmental Breeders Sweepstakes - Louisville, KY

AUGUST:

- 10 IL State Fair AOB Heifer Show - Springfield, IL
- 11 IL State Fair Low % Open Show - Springfield, IL
- 11 IL State Fair Junior Heifer Show - Springfield, IL
- 12 IL State Fair Junior Steer Show - Springfield, IL
- 13 IL State Fair Open Show - Springfield, IL

OCTOBER:

- 23 American Royal Simmental Show - Kansas City, MO

NOVEMBER:

- 5 Premier Group Sale - Altamont, IL
- 13 North American Simmental Sale - Louisville, KY
- 14 North American Simmental Show - Louisville, KY

DECEMBER:

- 19 Pride of the Prairie Sale - Seymour, IL



www.illinoissimmental.com

Do you have upcoming events? We would like to list your Simmental-related events in the *Illinois Simmental News*. Please contact us so we can list your event in our next issue.

Illinois Simmental Association
3511 N. 2200 E. Rd.
LeRoy, IL 61752